

# ***MODU System***

## ***Product Brochure***



*Solutions for every phase of your production line...*





Simplicity · Solutions

A simple concept modular & flexible

MODU System was established based on this concept to meet the ever increasing demand for conveyors that are easy to install & reconfigure, highly flexible, reliable, having an aesthetic look, easy to transport and yet economical to own.



**3-Dimensional Layout**  
MODU conveyors make the most out of limited factory space by utilizing overhead space and small radius turns.

Environment: Our Dedication

At MODU System, we are dedicated to bring continuous environmental improvement through our “reduce, reuse and recycle” programmes. Use of fully recyclable product materials e.g. aluminium, POM, ABS etc. and systematic coding of our products for easy recovery and recycling is an indication of our commitment to better environment. In addition, our conveyor modular design helps to extend the product life cycle



Flat Pack

The shipping model at MODU System has evolved as an efficient approach for storage and handling of products. This model, together with swift delivery procedure and ready stock enables the company to deliver automation products to global markets like Asia, Europe, America, Australia, and Africa. The efficiency with which we serve our global customers is an endorsement of our technical proficiency and engineering business insight.



**Standard Parts**  
Parts are made of lightweight materials, such as aluminium alloy and engineered plastics designed to exact tolerances for easy accurate fit.

Flexible Design - Simple Assembly

The conventional conveyor system is normally the belt & roller which is difficult to install & dismantle, expensive to build and maintain, and cannot be reconfigured. MODU conveyors are modular and flexible, which makes them very cost effective. The straights, supports, and bends are made up of various re-assembled components. Therefore MODU conveyors can be installed or reconfigured (realigned, extended or shortened) within a very short time-frame easily by using simple tools.



Conveyor System



Economic Ownership



Excellent Quality



Low Maintenance



Short-time Delivery



PLASTIC CHAIN SERIES

MODU System provides diverse plastic chain conveyor systems. All conveyor systems can be effortlessly assembled with standard tools. MODU Components are prepared with anodized aluminum and plastic, giving a spotless and artistic outlook. A ready stock availability of conveyor components are ensured at MODU at all times. The bends, straights and supports are made up of pre-assembled pieces due to which MODU Conveyors can be reconfigured or assembled in a lesser time using simple hand held tools.

Plastic Chain With Aluminium Frame



MS2	MM3	ML2	MX2
Chain width: 63mm Beam Width: 65mm	Chain width: 83mm Beam Width: 85mm	Chain width: 140mm Beam Width: 145mm	Chain width: 220mm Beam Width: 225mm

Plastic Chain With Stainless Steel Frame



DS2	DM3	DL2	DX2
Chain width: 63mm Beam Width: 65mm	Chain width: 83mm Beam Width: 85mm	Chain width: 140mm Beam Width: 145mm	Chain width: 220mm Beam Width: 225mm

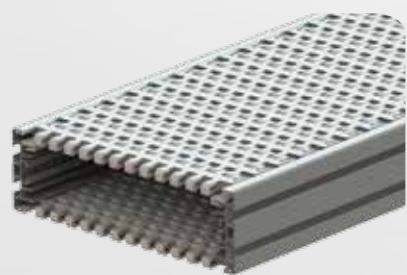




## PLASTIC BELT SERIES

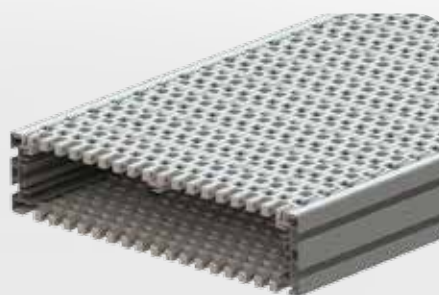
The new modular plastic belt conveyor system from MODU is a simplified solution for conveying large products. All components of the plastic belt conveyor is standardized for easy engineering, maintenance and operation. Simplicity in its design makes MODU's new plastic belt conveyor reliable, flexible, safe and adaptive to any requirements. The white POM belt surface is flat and smooth which minimizes the risk of scratches on products, allowing safe handling of sensitive products. Plastic belt conveyor systems are designed to integrate with new and existing production equipment. Machinery that has been laid out to fulfill factory and operator requirement can easily be linked using suitable components and conveyors from our modular range.

### Plastic Belt With Aluminium Frame



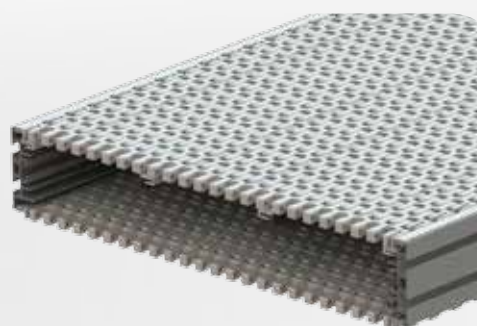
#### MT2

Chain width: 315mm  
Beam Width: 360mm



#### MR2

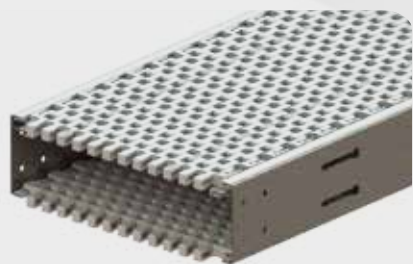
Chain width: 438mm  
Beam Width: 480mm



#### MF2

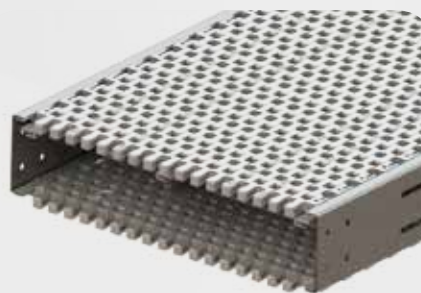
Chain width: 585mm  
Beam Width: 625mm

### Plastic Belt with Stainless Steel Frame



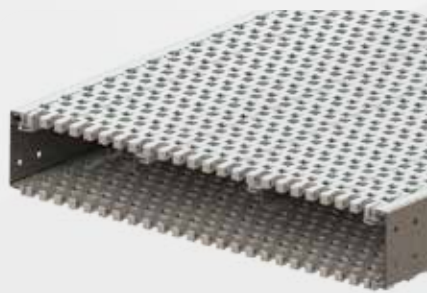
#### DT2

Chain width: 315mm  
Beam Width: 360mm



#### DR2

Chain width: 438mm  
Beam Width: 480mm



#### DF2

Chain width: 585mm  
Beam Width: 625mm

## TECHNICAL DATA

MODU System have made significant progress in the conveyor business surging ahead of its competitors, to provide a 'one-stop modular conveyor system centre' to serve a varied clientele. This is further accentuated by a proven track record in the international business arena and a widespread acceptance and recognition of its largely superior products, innovative designs and professional services.

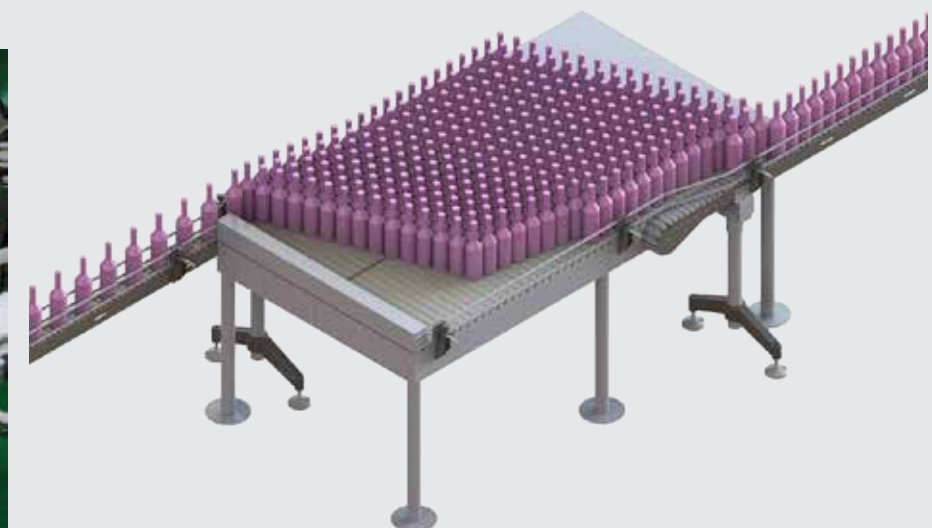


### Plastic Chain Conveyor Data

	MS2 / DS2	MM3 / DS2	ML2 / DL2	MX2 / DX2
Chain width	63mm	83mm	140mm	220mm
Tensile strength at 20°C (POM)	3000N	5000N	6000N	6000N
Tensile strength at 20°C (PP)	-	2000N	2600N	-
Maximum working tension (POM)	500N	1000N	1300N	1300N
Maximum working tension (PP)	-	600N	800N	-
Working temperature	-20°C to 60°C	-20°C to 60°C	-20°C to 60°C	-20°C to 60°C
Recommended running speed	3-50 m/min	3-50 m/min	3-50 m/min	3-60 m/min
Max.conveyor length (depend on layout)	30m	30m	30m	30m
Minimum turning radius	150mm	160mm	200mm	500mm
Link spacing (Pitch)	25.4mm	33.5mm	44.5mm	44.5mm
Chain weight (POM plain chain)	0.75kg/m	1.2kg/m	2.5kg/m	3.4kg/m
Chain weight (PP plain chain)	-	-	-	-
Chain weight (POM friction chain)	0.75kg/m	1.42kg/m	1.91kg/m	3.6kg/m
Chain weight (PP friction chain)	-	-	-	-
Chain weight (gripper chain)	-	1.47-1.87kg/m	-	-

### Plastic Belt Conveyor Data

	MT2 / DT2	MR2 / DR2	MF2 / DF2
Chain width	315mm	438mm	585mm
Tensile strength at 20°C (POM)	12000N	12000N	12000N
Tensile strength at 20°C (PP)	-	-	-
Maximum working tension (POM)	2600N	2600N	2600N
Maximum working tension (PP)	-	600N	800N
Working temperature	-20°C to 60°C	-20°C to 60°C	-20°C to 60°C
Recommended running speed	3-50 m/min	3-50 m/min	3-50 m/min
Max.conveyor length (depend on layout)	30m	30m	30m
Minimum turning radius	900mm	1200mm	1700mm
Link spacing (Pitch)	45mm	45mm	45mm
Chain weight (POM plain chain)	2.74kg/m	3.81kg/m	5.10kg/m

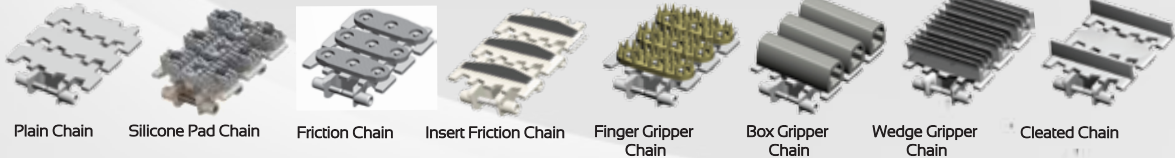






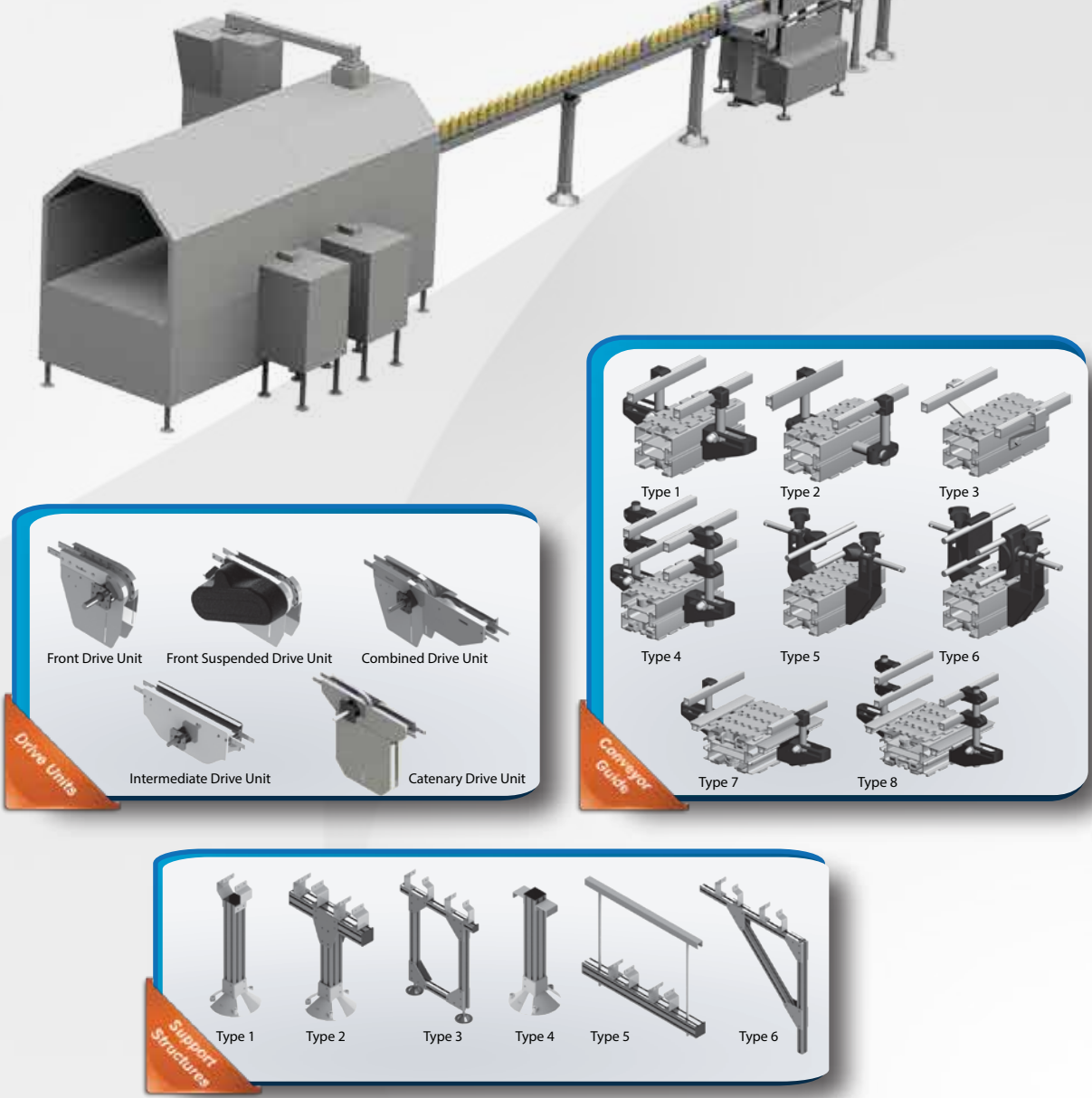
Chain Top - Options

Multiple chain top options allow for a variety of applications. Standard chain material is POM. Other chain materials are also available upon request. Materials available are Anti-Static, and Kevlar.



Component Guide

Type / Model	MS2	MM3	ML2	MX2	MT2	MR2	MF2
Drive	Front, Combined, Suspended, Intermediate	Front, Combined, Intermediate, Catenary, Wheel Bend, Suspended	Front, Combined, Suspended, Intermediate	Front, Combined	Front	Front	Front
Idler	End	End	End	End	End	End	End
Chain	Plain, Friction, Flocked	Plain, Friction, Cleated, Gripper, Flocked	Plain, Friction, Cleated, Flocked	Plain, Friction	Plain, Cleated	Plain, Cleated	Plain, Cleated
Horizontal Wheel Bend							
Radius 150mm	30°, 45°, 90°, 180°	-	-	-	-	-	-
Radius 160mm	-	30°, 45°, 90°, 180°	-	-	-	-	-
Radius 200mm	-	-	30°, 45°, 90°, 180°	-	-	-	-
Horizontal Plain Bend (Minimum Radius)							
Radius 500mm	30°, 45°, 60°, 90°	30°, 45°, 60°, 90°	30°, 45°, 60°, 90°	30°, 45°, 60°, 90°	-	-	-
Radius 700mm	30°, 45°, 60°, 90°	30°, 45°, 60°, 90°	30°, 45°, 60°, 90°	30°, 45°, 60°, 90°	-	-	-
Radius 900mm	-	-	-	-	30°, 45°, 60°, 90°	-	-
Radius 9000mm	30°, 45°, 60°, 90°	30°, 45°, 60°, 90°	30°, 45°, 60°, 90°	30°, 45°, 60°, 90°	-	-	-
Radius 1200mm	-	-	-	-	-	30°, 45°, 60°, 90°	-
Radius 1700mm	-	-	-	-	-	-	30°, 45°, 60°, 90°
Vertical Bend							
Radius 300mm	5°, 7°, 15°, 25°, 30°, 45°, 90°	-	-	-	-	-	-
Radius 400mm	-	5°, 7°, 15°, 25°, 30°, 45°, 90°	-	-	-	-	-
Radius 500mm	-	-	-	-	5°, 15°, 25°	5°, 15°, 25°	5°, 15°, 25°
Radius 1000mm	25°, 45°, 90°	25°, 45°, 90°	5°, 7°, 15°, 25°, 30°, 45°, 90°	5°, 7°, 15°, 25°, 30°, 45°, 90°	-	-	-





# MODU CONVEYORS AT WORK

## Food & Packaging Industry



Gripper conveyor system integrated with can cleaner



High speed can manufacturing lines



Cleated conveyor for biscuit packaging



Canned food production line



Incline friction conveyor for cartons



Liquid bottle filling with gripper conveyor



Puck system for fruit sorting line



Carton packing line

## Tea Bag Handling Industry



Tea bags filing line



Tea bags filing line



Packaging line for tea bags

## Personal Product & Pharmaceutical Industry



Stainless steel conveyor for pharmaceutical Industry



Alpine conveyor for puck storage



Liquid bottles on puck



Conveyors for shampoo handling



Conveyor for personal products

## Paper Converting Industry



Conveyor for Diaper line



Vertical Diverter for Tissue Rolls



Conveyors with automated width adjust



Tissue incline conveyors

## Optical Industry



Tray distribution



Complete distribution systems



Tray distribution



Lens tray conveyors



Lens tray pushers

## Electronic & Electrical Industry



Anti-Static conveyor chain



Hard disk substrate production line



Conveyor line for multi electronic components



Hard disk substrate production line

## Automotive & Machined Part Industry



Robotic automotive part assembly



Automotive oil filter line



Conveyor for bearing manufacturing

## Flexible & Reliable Solutions for Increased Productivity





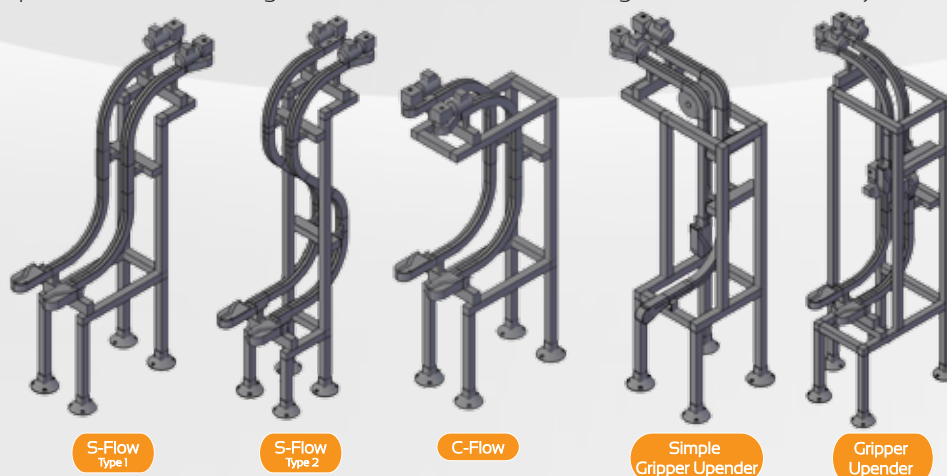


# SPECIAL EQUIPMENT & DEVICES



## Gripper System Elevator / Lowerator

Gripper is utilized for moving the products up and down or to put things on a hold between the conveyers or at the finishing stage of the conveyor. Two sets of conveyers are attached in a gripper in order to transport products to higher or lower elevations while taking up minimal floor space. It holds the product in a firm but gentle manner before releasing it to another conveyor.



## Continuous Flow Elevator / Lowerator

MODU System's Continuous Flow Elevator / Lowerator is commonly used to convey food and beverage cases, bagged products, trays, and other similar items. It is designed for high speed and large payload capacity. Continuous Flow Elevators / Lowerator frees up floor space in case/carton palletizing lines, warehousing, or in work-in-progress storage applications by transferring products to an overhead conveyor section. This machine is ideal to create aiseways, clearance for forklifts, transfer product between floors and etc.



Composite Can Cleaner



Accumulation Conveyor



Spiral Conveyor



Belt Conveyor



Roller Conveyor  
(Light / Heavy Duty)



Product Sorting  
(Bar code / Vision System)



Robotic Palletizing



High Speed Pick and place



High performance robot for welding,  
material testing, polishing,  
Machine treading, Gluing and etc.

Other customised equipment / conveyors / devices available upon request. Please consult us for more information.

## SERVICE CONVEYOR & AUTOMATION



Sushi Conveyor



MODU Express Delivery



Display Conveyor



Sushi Robots